



LEGAL EPIDEMIOLOGY TRAINING AND TECHNICAL ASSISTANCE

Access collaborative assistance and learn the theories and methods that support the advancement of laws and policies that improve health, well-being, and equity.

Legal epidemiology applies the scientific method and legal expertise to better understand how laws and legal practices influence public health.

BUILDING CAPACITY TO SUPPORT PUBLIC HEALTH

Staff at the Center for Public Health Law Research at Temple University’s Beasley School of Law have trained more than 3,500 individuals from a broad cross-section of industries, including US and international health departments and public health organizations, advocacy and professional membership organizations, and academic institutions, among others.

Transdisciplinary teams from around the world use legal epidemiology to advance the effective use of law to improve the public’s health and promote well-being and equity. Legal epidemiology creates an evidence base that can guide reform and implementation, and increases the reach and impact of a law or policy on health while reducing negative effects.

LEARNING OPTIONS

As one of the founders of the field of legal epidemiology, the Center has dedicated itself to the widespread adoption of scientific tools and methods for mapping and evaluating the impact of laws and policies on health.

The Center offers a variety of comprehensive training opportunities that teach the array of skills and competencies necessary to launch and complete a legal epidemiology research project — from the development of legal data using policy surveillance to the application of the data in research and practice.

	FREE	VIRTUAL	LEARN AT YOUR OWN PACE	COLLEGE CREDIT AWARDED
Self-guided Modules on Policy Surveillance	✓	✓	✓	
Introduction to Policy Surveillance Webinars	✓	✓		
Policy Surveillance Institute		✓		
Global Certificate in Legal Epidemiology		✓	✓	
Graduate Certificate in Public Health Law Research				✓



Use the code to access registration details and the most up-to-date information on training opportunities and events.



Policy Surveillance and Scientific Legal Mapping Training

Legal data are at the root of all legal epidemiology research. Since 2011, the Center for Public Health Law Research has developed, refined, and applied the methods used in policy surveillance, the systematic, scientific collection and analysis of laws of public health significance. Our wide-ranging instruction on policy surveillance and other scientific legal mapping methods includes free **self-guided modules and webinars**, and the **annual Policy Surveillance Institute**, a three-day intensive training that teaches the policy surveillance process in detail from start to finish.

Legal Epidemiology Certificates

Through partnerships with the Temple University Office of Continuing Education, the College of Public Health, and the Beasley School of Law, we offer a **for-credit graduate certificate** and a **non-credit, continuing education global certificate** that provide comprehensive instruction in public health law, scientific legal mapping methods like policy surveillance, and legal evaluation. These certificates lay a foundation of public health law knowledge and demonstrate the usefulness of applying the scientific method to law and policy research and practice.

Direct Technical Assistance and Collaboration

Our capacity for technical assistance can range from a one-time consultation session to hands-on, **in-person or virtual support** that lasts the duration of a full scientific legal mapping project. Our researchers also work directly with teams to build data through a collaborative model.

BUILDING AN ECOSYSTEM OF DATA & EVIDENCE

Law and policy are powerful interventions for health. Yet, the impacts of law and legal practices on health continue to be underexplored.

Broad Application for Research and Practice

Legal epidemiology methods may be applied to any area of law or policy relevant to the public's health and well-being. The Center teaches and collaborates with researchers and practitioners on a broad portfolio of topics, including mitigation policies related to COVID-19, reproductive health, drug policy, housing and environmental health, workforce development, and public health policymaking, among many others.

Funding the Movement

Funders for legal epidemiology are diverse and fund an equally broad array of projects. Past and current funders of the field of legal epidemiology include the American Public Health Association, Arnold Ventures, the de Beaumont Foundation, Pew Charitable Trusts, the Robert Wood Johnson Foundation, Trust for America's Health, the US Centers for Disease Control and Prevention, the US National Institutes of Health, W.K. Kellogg Foundation, the World Health Organization, and more.

Contact us!

Center for Public Health Law Research
Temple University Beasley School of Law
1719 N. Broad Street
Klein Hall, Suite 509
Philadelphia, PA 19122

Tel.: 215-204-2134

Email: LearnLegalEpi@temple.edu

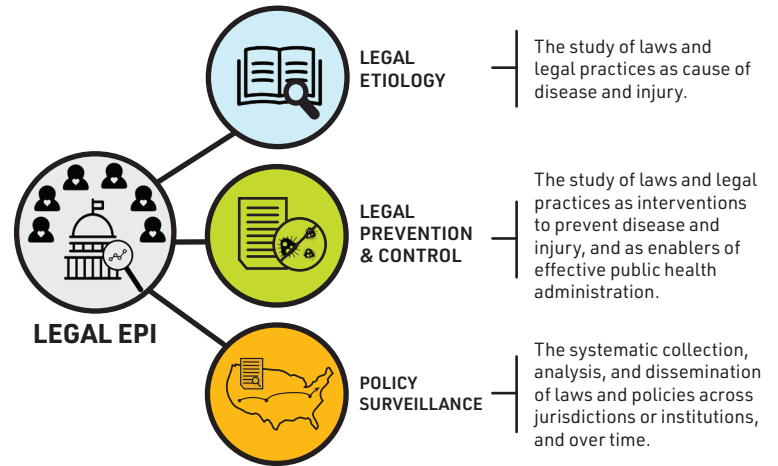
<http://phlr.org>

LEGAL EPIDEMIOLOGY

The scientific study and deployment of law as a factor in the cause, distribution, and prevention of disease and injury in a population.

Legal epidemiology encompasses legal etiology, legal prevention and control, and policy surveillance theory and methods to

- **Measure** the nature and distribution of laws across jurisdictions and over time.
- **Evaluate** the implementation and impact of legal interventions on public health, and the health effects of non-health laws.
- **Analyze** the implementation and impact of laws defining health department powers and duties.
- **Enable and support** the rapid diffusion of healthier laws and policies.



WHO USES LEGAL EPIDEMIOLOGY?

Legal epidemiology is deeply rooted in a **transdisciplinary approach** to public health law – calling for **true integration of disciplines to collaborate in developing and applying legal epidemiology theory, methods, and conceptual tools**. The consumers of legal epidemiology are just as diverse as the practitioners, and include lawyers, researchers, epidemiologists, social scientists, policymakers, public health practitioners, advocates, the media, and the public.

LEGAL EPIDEMIOLOGY IN PRACTICE: SIX STEPS



1. Engage

Identify a public health problem or a policy of interest through feedback from the community, subject matter experts, and policymakers.



2. Identify research needs

Review existing research and identify gaps to inform new research on laws and policies.



3. Create legal data

Conduct a legal mapping study to create empirical legal data that can be compared across jurisdictions and over time.



4. Analyze

Complete a legal evaluation study to analyze the relationship between law and health using empirical legal data linked to outcome data.



5. Translate

Publish and communicate findings to inform public health practice, decision-making, and public knowledge via agencies, academia, decision-makers, advocates, media, and the public.



6. Monitor and repeat

Continue monitoring and measuring legal changes and engaging with the community and stakeholders about the impact of laws, repeating previous steps as legal changes arise.

LAWATLAS.ORG

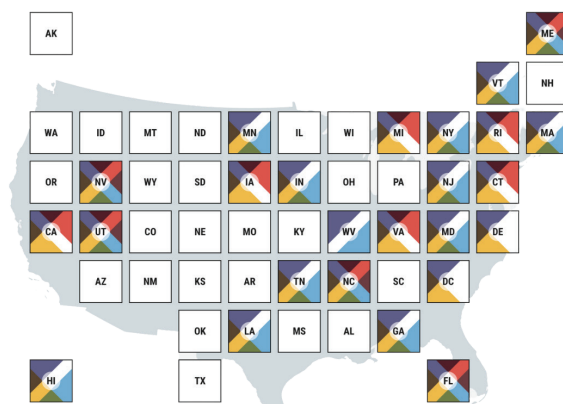
HIGH-QUALITY DATA ON LAWS AND POLICIES IMPORTANT TO HEALTH

LawAtlas.org is home to **more than 130 open access legal datasets built using rigorous quality standards.**

Using interactive maps and tables, visitors can freely explore, compare, and download cross-sectional and longitudinal datasets, and read the full text of laws and policies from more than 20 domains of public health:

- US and international reproductive rights
- US state and local housing laws
- Laws governing US public health authority and emergency response
- International disease response laws
- Economic policies
- And many more!

Data on LawAtlas.org are shared as free, downloadable .csv files accompanied by transparent documentation to support the use and replicability of the data.



LEGAL DATA FOR RESEARCH AND PRACTICE

Collaborating to Promote Access to a Quality Legal Data Ecosystem

Not all legal data are created equal. Data on LawAtlas.org are built using rigorous quality control standards associated with scientific legal mapping. They are built through coordination and partnership with trained researchers, subject matter experts, and practitioners with funding from the Robert Wood Johnson Foundation, Arnold Ventures, the US National Institutes of Health, Pew Charitable Trusts, Trust for America's Health, and more.

Policy surveillance and other scientific legal mapping data are **essential tools for public health** because they can be readily used to

- conduct empirical evaluations of the role and effects of law on health, well-being, and equity;
- strengthen workforce capacity by providing accessible, non-partisan information about the law;
- measure progress and diffuse innovative policy ideas.

The data on LawAtlas.org have been **cited more than 265 times in scholarly research** since 2015. Governmental bodies and other prominent institutions, including the US House of Representatives, the US Supreme Court, the US Social Security Administration, the National League of Cities, the Association of State and Territorial Health Officials, and the US Centers for Disease Control and Prevention, among others around the world have used LawAtlas data **to influence policy and advance public health**.



Scan to explore the data
or visit LawAtlas.org

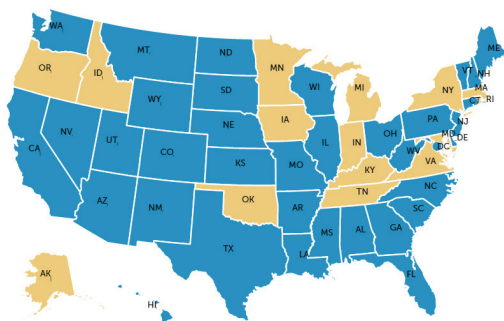
PDAPS: PRESCRIPTION DRUG ABUSE POLICY SYSTEM

QUICK ACCESS TO ACCURATE DRUG POLICY INFORMATION

The Prescription Drug Abuse Policy System (PDAPS) at PDAPS.org is a **leading source of rigorous legal data related to prescription drug use and misuse.**

Visitors to the site can compare laws and policies across time and jurisdictions using free interactive maps and tables, and read the full text of the law. All the data on PDAPS.org may be downloaded as .csv files, along with documentation to support data use and replicability.

Expert scientific legal researchers at the Center for Public Health Law Research and our collaborators use **policy surveillance** — the systematic, scientific tracking of laws and policies that influence health — to create and maintain these high-quality, reliable data that can be used in research and practice. Data on the site are supported by funding from the US National Institutes of Health, the US Office of National Drug Control Policy, and the Foundation for Opioid Response Efforts, among others.



PDAPS.org features **more than 30 datasets** that have been cited at least 250 times in scholarly publications, and have been referenced by a wide range of researchers, policymakers, and advocates in their work.

AVAILABLE DATASETS

Criminal Justice

- Drug Induced Homicide
- Incarceration Effects on Medicaid Status
- Involuntary Commitment for Substance Use
- Medicaid Coverage of Medication Assisted Treatment
- Medication Assisted Treatment in State Correctional Facilities

Harm Reduction

- Good Samaritan Overdose Prevention Laws
- Naloxone Overdose Prevention Laws
- Syringe Services Programs Laws

Medical Marijuana

- Caregiver Rules
- Dispensary Regulations
- Laws for Patients
- Product Safety

Opioid Related Controls

- Direct Dispensing of Controlled Substances
- Informed Consent for Opioid Prescribing Laws
- Opioid Prescribing Guidelines for Acute and Emergency Care
- Pain Management Clinics
- State Laws Limiting Prescriptions for Opioid Analgesics

Medications for Opioid Use Disorder

- Commercial Insurance and Medicaid Coverage of Medications for Opioid Use Disorder Treatment
- COVID-19 Mitigation Laws at State Correctional Facilities Relating to Opioid Use Disorder Treatment
- COVID-19 State Medicaid Waivers for Substance Use Disorder Treatment
- Increasing Access to Buprenorphine and Methadone During COVID-19
- Medicaid Expansion and Section 1115 Waivers
- Requirements for Licensure and Operations of Medications for Opioid Use Disorder Treatment

Prescription Drug Monitoring Programs

- Access and Registration
- Administration
- Implementation Dates
- Reporting and Authorized Use
- Reporting, Mandates & Access, 2014-2019

Related Topics

- Drugged Driving
- Medication Assisted Treatment with Methadone
- Recreational Marijuana
- State Laws Directing Opioid Litigation Proceeds



Scan to explore the data
or visit [PDAPS.org](https://pdaps.org)

MONQCLE SOFTWARE SYSTEM

REVOLUTIONIZING LEGAL RESEARCH

MonQcle is a web-based legal research software used to navigate and organize complex legal texts to produce legal data for research and practice.

Using MonQcle, you can identify, code, and analyze laws and policies, then visualize, share, and update your findings all in one place.



Organize your research and collaborate

Move beyond clunky, ineffective spreadsheets to a clean and user-friendly design. With MonQcle, teams can organize every resource they need throughout every step of the research process and work concurrently.



Build legal data across space and time

MonQcle tools support the organization and enables the analysis of laws and policies to easily track them over time, and across jurisdictions of all levels — from cities, counties, and school districts, to states and countries.



Easily update and maintain your data

MonQcle makes it easy to make changes and update your projects, ensuring your data stay current and relevant.



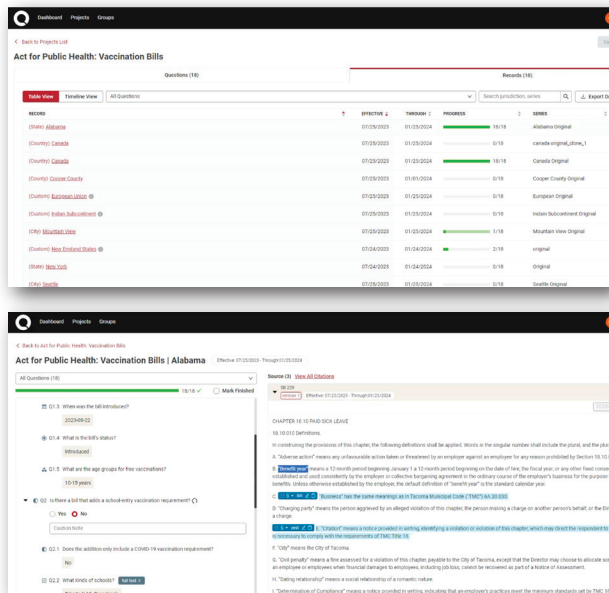
Visualize and share your data

MonQcle has built-in data visualization tools that provide you with a variety of ways to review, present, and publish and share your research — including maps, tables, charts, and reports!

Research teams from universities and research organizations, advocacy organizations, health agencies, governments, and more from around the world use MonQcle to **build data for use in their research and practice.**

MonQcle is a platform with tools to **create cross-sectional and longitudinal datasets that link text to locations** (jurisdictions or other places).

The platform applies a question-and-answer framework accommodating full pin citations that link each answer to the user-provided text. MonQcle also includes tools to easily integrate quality assurance processes and reduce human error.



Contact **MonQcle@temple.edu** to get started!

WORK WITH US!

PARTNER WITH THE CENTER FOR PUBLIC HEALTH LAW RESEARCH

We work with teams of lawyers, policy makers, students and faculty, advocates, statisticians, economists, and epidemiologists to support public health law research and encourage the effective use of law to improve the public's health, well-being and equity. Here are a few ways you can work with us:



Legal mapping data and technology resources to support research and practice

Researchers, students, practitioners, advocates, and others use our free data and software to enhance their work in public health law research and practice.

- Use our [MonQcle software system](#), the premier tool for legal research adopted by more than 1,000 users worldwide, to build a policy surveillance dataset on your own or adopt one of our existing datasets to update and maintain. MonQcle is free for students and academic researchers.
- Visit [LawAtlas.org](#) to download and explore free legal data existing using our interactive visualizations on more than 120 public health law topics.
- Visit [PDAPS.org](#) to access free legal data tracking key state laws related to prescription drug abuse.
- Visit [CityHealth.org](#) for a great example of how policy surveillance can be used to move the needle on improving health in cities.



Training and educational opportunities in legal epidemiology and policy surveillance

The Center is the premier institution developing and teaching legal epidemiology methods. Our robust scientific legal mapping process, called policy surveillance, can be applied to any topic or level of policy to build empirical legal data.

- Enroll in our [Global Certificate in Legal Epidemiology](#), a 16-hour certificate, self-guided non-credit program that provides a deeper understanding of the foundations of legal epidemiology and the transdisciplinary model of public health law.
- Earn a [graduate certificate in public health law research](#) at Temple University through the Center in association with the College of Public Health and the Beasley School of Law.
- Explore the Center's [policy surveillance methods training program](#). Learn on your own through our self-guided modules or attend a live webinar or annual Institute.
- Access [theory and methods resources](#) that provide a foundation for the field and articulate best practices and methods for research.



Analyze and understand the impacts of law on health, well-being and equity

Our team partners with institutions to understand and evaluate existing evidence on a legal topic, build resources to track and analyze progress, and articulate policy recommendations to support action and better health faster.

- Past partnerships have developed a novel method for [identifying gaps in evidence](#) on the health effects of abortion law, more than 100 policy recommendations and expert analysis in response to the [COVID-19 pandemic](#), a systematic review of research evaluating the [impact of the housing system](#) on health equity, and an analysis of [preemption](#) across 15 domains, among others.



Become a CPHLR Research Fellow or apply for a job at the Center

New and established researchers may join our team for a [two-year fellowship](#). Fellows gain access to our data and team's expertise, our grants management, and communications resources, as well as opportunities for mentorship, and to network with other public health law researchers at Temple University and beyond.



Scan the QR code to access our resources and learn more about opportunities at [PHLR.org](#)